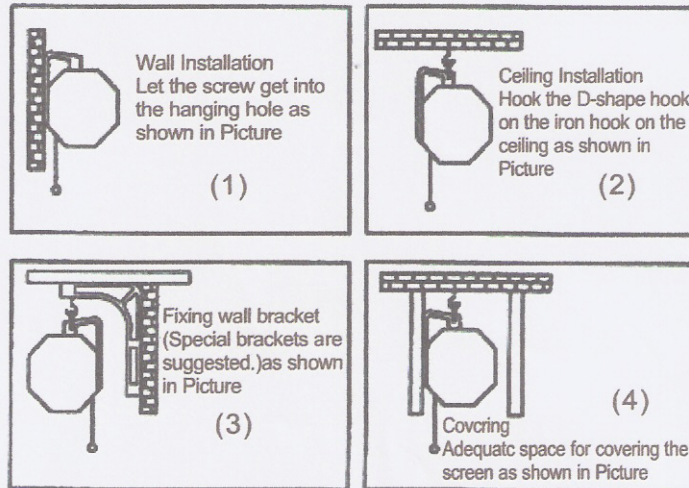


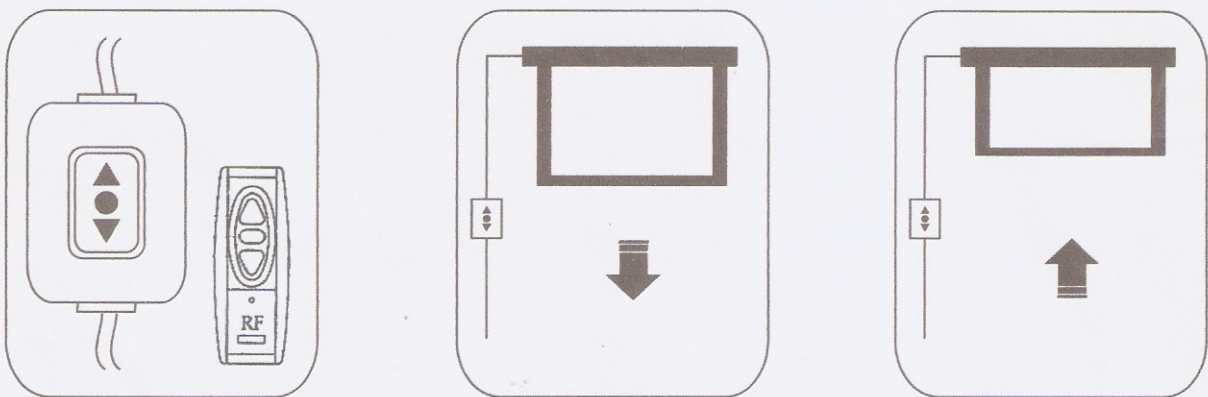
Electric Screen Operation Manual



1. Installation the metal dram of screen on the wall or ceiling.



2. Unfasten the belt and connect the electric screen to electric power supply.
3. Stretching out projector screen. Press DOWN key of the switch or remote control and the screen will automatically stretch down.
4. Rolling back projector screen. Press UP key of the switch or remote control and the screen will automatically roll up into the metal dram.
5. Stopping projector screen. Press STOP key of the switch or remote control and it can be stopped at any position.



Notice:

- (1) The switch should be positioned at STOP when the screen is not in use.
- (2) Before rolling back the screen, please make sure that there is no insect, dust or other object on the screen.
- (3) The screen can be rolled up and down continually, but continuous time of rolling up and down should not exceed 5 minutes to prevent overheat of the motor. In case of continuous use necessary, you should wait until the motor cools down.