

KVM EXTENDER PS/2 USER MANUAL

MODEL 524353



INT-524353-UM-1008-03

Thank you for purchasing this INTELLINET NETWORK SOLUTIONS™ KVM Extender PS/2, Model 524353.

Supporting distances of up to 150 meters (450 feet) using inexpensive Cat5 network cable, this handy device — including both station and computer units in one package — is perfect for the network administrator whose office is too far from the computer room for standard KVM cables to work properly.

The dual-console operation allows a keyboard and mouse to be attached to a computer locally with another set attached remotely, providing you with the ability to operate the computer from either location; that is, from the distant office or from within the computer room.

The instructions in this user manual make installation and operation relatively simple, so you'll soon be enjoying the benefits of these additional features:

- Supports XGA, VGA and SVGA systems
- Supports video resolutions up to 1024 x 768
- Computer connection to transmitter unit via 3-in-1 cable (included)
- Compatible with all PS/2-equipped computer systems
- Lifetime Warranty

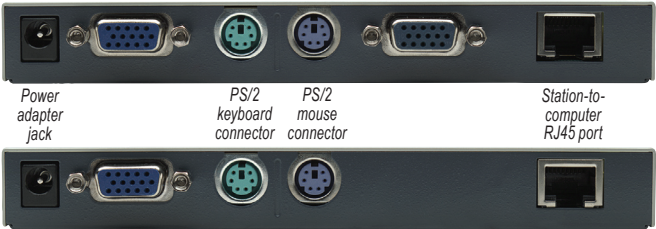
Package Contents

- KVM Extender Station Unit
- KVM Extender Computer Unit
- External power adapter
- 3-in-1 connection cable
- User manual

NOTE: Some product and screen images have been modified to fit the format of this manual.

Hardware

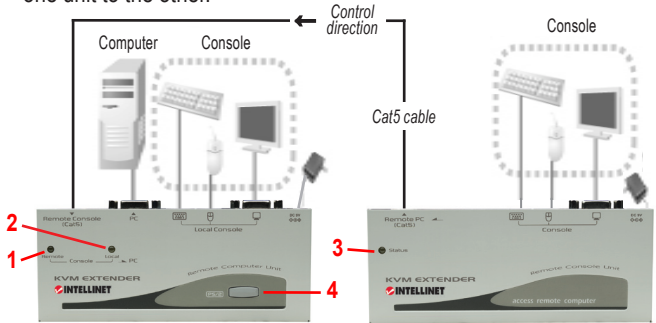
Computer Unit back panel



Station Unit back panel

LEDs & Buttons (as noted in diagram below)

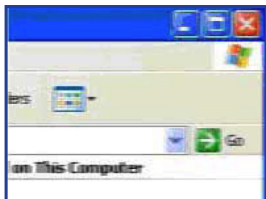
- 1 Remote (computer unit) — When this LED is lit, the computer is being controlled by the remote unit.
- 2 Local (computer unit) — When this LED is lit, the computer is being controlled locally.
- 3 Status (station unit) — When this LED is lit, the station unit is remotely controlling the computer unit.
- 4 Button (computer unit) — Pushing this button switches control from one unit to the other.



Operation

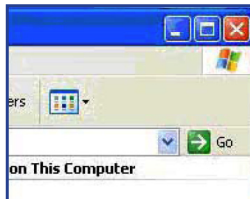
Prior to initial operation, you may want to set the video compensation. Hotkeys are used to adjust the equalization on the remote unit to achieve optimum video signal quality for different cable lengths. Five settings are available, and the device generates a number of beeps to “acknowledge” the cable length (right), so be sure you know the length before proceeding with the compensation.

Beeps	UTP Cable Length
1	up to 100' (30 m)
2	100-200' (30-60 m)
3	200-300' (60-90 m)
4	300-400' (90-120 m)
5	400-500' (120-150 m)



Left: before video compensation

Right: after video compensation

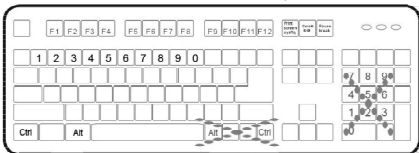


With a keyboard and mouse connected to the station unit, the system conducts the emulation for the local computer, which can be controlled remotely.

Hotkeys

Hotkey commands are short keyboard sequences used to select a computer, activate a scan and so forth.

A hotkey sequence begins with two Left Ctrl (Control) keystrokes and is completed with one or more additional entries immediately following. A built-in buzzer on the KVM Extender PS/2 generates a high-pitched



beep when acceptable hotkey commands are entered; when an incorrect command is entered, a short beep followed by a longer beep is heard.

NOTE: To enable the Compatibility mode (so the KVM Extender PS/2 will work with a KVM switch that also uses “Ctrl” hotkey sequences), press Ctrl + Ctrl + Alt/E (“Alt” and “E” pressed simultaneously).

Station Unit Hotkey Commands

Standard Command (without E optional)	Compatibility Mode (With E optional) (Add E if a KVM Switch cascaded)	Function Description
* Ctrl + Ctrl + T		Mode selection in Sequence Toggles console control between Local Computer and Remote Computer
* Ctrl + Ctrl + F2	Ctrl + Ctrl + E * + F2	Escape from hotkey mode
Ctrl + Ctrl + Esc		Cascading status selection <u>Two beeps</u> : Enables Compatibility Mode so that the KVM extender will work with a KVM switch that also uses a Ctrl hotkey sequence <u>One beep</u> : Disables Compatibility Mode
* Ctrl + Ctrl + 1	Ctrl + Ctrl + E * + 1	Local mode selection Switches control to local computer
* Ctrl + Ctrl + 2	Ctrl + Ctrl + E * + 2	Remote mode selection Switches control to remote computer(input allowed only if the Computer Unit is in Remote or Auto mode)
Ctrl + Ctrl + F4	Ctrl + Ctrl + E * + F4	Keyboard speed selection Adjusts the typematic rates of keyboard, the KVM Extender generates 1 to 4 beeps corresponding to 6, 12, 20, and 30 characters/sec respectively. (for PS/2** only)
* Ctrl + Ctrl + F11	* Ctrl + Ctrl + E * + F11	Video compensation adjustment Adjusts the video compensation, the KVM Extender generates 1 to 5 beeps corresponding to the cable lengths of 0~30, 30~60, 60~90, 90~120 & 120~150 meters, respectively.
Ctrl + Ctrl + F12	Ctrl + Ctrl + E * + F12	Mouse resynchronized (for PS/2 only)

In reference to the Station Unit Hotkey Commands chart above, the special hotkey command **Ctrl** + **Ctrl** + **E** + **E** allows the KVM Extender PS/2 to link with Port E (the 13th port of a cascaded KVM switch) when the Compatibility mode is enabled.

- * Add "E" to the command sequence when the configuration involves any cascaded KVM switches.
- ** The Keyboard Speed Selection option does not apply to models other than PS/2.

Computer Unit Hotkey Commands		
Standard Command (without E optional)	Compatibility Mode (With E optional) (Add E if a KVM Switch cascaded)	Function Description
Ctrl + Ctrl + T		Mode selection in sequence Toggle switch selects Auto-Loc-Rem mode
Ctrl + Ctrl + Esc		Escape from hotkey mode
Ctrl + Ctrl + Alt+E		Cascading status selection Two beeps: Enables Compatibility Mode so that the KVM extender will work with a KVM switch that also uses a Ctrl hotkey sequence. One beep: Disables Compatibility Mode
Ctrl + Ctrl + 1	Ctrl + Ctrl + E + 1	Local mode selection Local Mode: Allows the user at local computer exclusive access to the system; remote access from computer at Station Unit is disabled.
Ctrl + Ctrl + 2	Ctrl + Ctrl + E + 2	Remote mode selection Remote Mode: Allows the remote user at Station Unit exclusive access to the computer at Computer Unit ; access to the computer from the Computer Unit is disabled
Ctrl + Ctrl + 3	Ctrl + Ctrl + E + 3	Auto mode selection
Ctrl + Ctrl + F3	Ctrl + Ctrl + E + F3	Latch time selection Auto mode latch time: 5, 15, 30, 60 seconds
Ctrl + Ctrl + F4	Ctrl + Ctrl + E + F4	Keyboard speed selection Adjust the typematic rates of keyboard, the KVM Extender generates 1 to 4 beeps corresponding to 6, 12, 20, and 30 characters/sec respectively. (for PS/2** only)
Ctrl + Ctrl + F6	Ctrl + Ctrl + E + F6	Privacy setting Configure the Computer Unit Video Signal***
Ctrl + Ctrl + F12	Ctrl + Ctrl + E + F12	Mouse resynchronization (for PS/2 only)

In reference to the Computer Unit Hotkey Commands chart above, the special hotkey command **Ctrl** + **Ctrl** + **E** + **E** allows the KVM Extender PS/2 to link with Port E (the 13th port of a cascaded KVM switch) when the Compatibility mode is enabled.

- * Add “E” to the command sequence when the configuration involves any cascaded KVM switch(es).
- ** The Keyboard Speed Selection option does not apply to models other than PS/2.
- *** With the Privacy Setting option, by repeating the hotkey commands the KVM Extender PS/2 generates 1 to 3 beeps in conjunction with the Computer unit LEDs, indicating the following setups:
 - **Computer unit in Local mode** ((Remote LED off: Local LED on)
 - 1 beep: Reset to factory defaults.
 - 2-3 beeps: Disable the Computer Unit output video signal.
 - **Computer unit in Auto mode** (LEDs flash alternately)
 - 1 beep: Reset to factory defaults.
 - 2 beeps: By triggering the keyboard or mouse, the user can temporarily disable the Computer unit output video signal. (The Computer unit user protects his privacy for 5, 15, 30 or 60 seconds, as noted in the Latch Time option in the above chart.)
 - 3 beeps: By triggering the keyboard or mouse, Station unit or Computer unit users can temporarily disable the output video signal. (The users protect their privacy for 5, 15, 30 or 60 seconds, as well.)

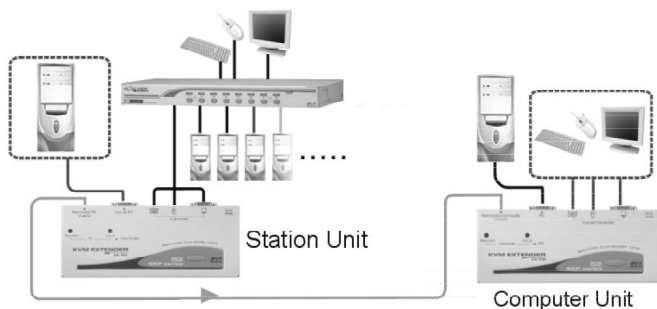
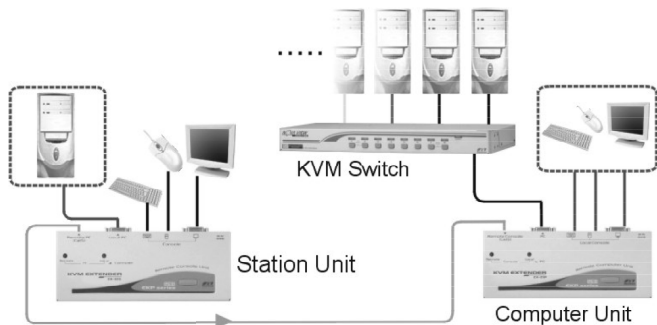
NOTE: If the mouse doesn't appear to be working normally, enter the Mouse Resynchronization command to synchronize it with the system.

Cascade Configuration

When setting up the KVM Extender PS/2 to include a KVM switch for a cascade configuration (see following diagrams), it may be necessary to prevent conflicts of hotkey commands between the units. Inserting the extra “E” to hotkey commands makes direct management possible.

Additional cascade considerations:

- The included external power adapter is needed in order to provide enough power to the Computer unit of the KVM Extender PS/2 when connecting to a KVM switch.
- To preclude the entry of improper keystroke commands on the Station unit, parameters such as cable length, keyboard speed and push-button control should be set up before connecting to a KVM switch.



Specifications

General

- Maximum resolution: 1024 x 768
- Connection distance: up to 150 m (450 ft.)
- Included cable: 3-in-1 cable, 1.8 m (6 ft.)
- Power: external power adapter, 9 V DC, 500 mA
- Certifications: FCC, CE Mark

Environmental

- Metal housing
- Dimensions: 156 (W) x 65 (L) x 20 (H) mm (6.2 x 2.5 x 0.8 in.)
- Weight:
 - Station unit: 305 g (10.75 oz.)
 - Computer unit: 315 g (11.11 oz.)

Package Contents

- KVM Extender Station unit
- KVM Extender Computer unit
- External power adapter
- 3-in-1 connection cable
- User manual



INTELLINETTM

N E T W O R K S O L U T I O N S

BRINGING NETWORKS TO LIFE

INTELLINET NETWORK SOLUTIONSTM offers a complete line of active and passive networking products.

Ask your local computer dealer for more information or visit

www.intellinet-network.com

Copyright © INTELLINET NETWORK SOLUTIONS

All products mentioned are trademarks or registered trademarks of their respective owners.