

Roth™



# OLi POWA-5

Active Monitors



User Manual : English

Contents

Important Information..... 3

Front & Rear Panels..... 4

Remote Control..... 5

Connecting Your Speakers ..... 6

Bluetooth Function ..... 7

Use with iPod / MP3 ..... 8

Use with Dockingstation ..... 9

Connecting TV / DVD / Console / PC..... 10

Limited Warranty..... 11

Specifications..... Back Page



Thank you...

Thank you for purchasing the Roth OLi POWA-5 Active Monitors.  
We sincerely hope that you enjoy using these speakers for many years to come.

Turn It Up.

## Important Information

### READ BEFORE OPERATING EQUIPMENT

Read all the instructions carefully before using the unit and keep them for future reference. Check that the voltage selector is switched to the correct position for your country.

### Safety Instructions

- Do not use this product near water or moisture
- Do not place the unit on sloped or unstable surfaces as the unit may fall off or tip over.
- Clean only with a dry cloth. Unplug this product from the wall outlet
- Do not attempt to service this product yourself.
- Opening or removing covers may expose you to dangerous voltages or other hazards.
- Please contact the manufacturer to be referred to an authorized service center near you.
- Place the unit on a solid surface.
- Do not block any ventilation openings.
- To prevent risk of fire or electric shock, avoid over loading wall outlets,
- Do not put it in a closed bookcase or cabinet that may keep air from flowing through its ventilation openings.
- Do not let objects or liquids enter the product.
- Protect the power cord from being walked on or pinched, particularly at plugs and the point where they exit from the product.

### Unpacking

These speakers were carefully tested and inspected during production and before packaging and shipping. After unpacking please check for any damage. It is rare that a unit is damaged during shipping, but if this does happen contact your retailer immediately.

We recommend that you keep the original carton and packing material for future shipping.

### Recommended Speaker Setup


Correct speaker placement has a huge impact on sound quality. There are many different theories, but all rooms and tastes are different so it's impossible to specify a correct placement. We do suggest you experiment with a few different locations see what is best for you. For the best bass response we recommend that you keep a minimum distance of 20-25cm between the speakers and the rear wall. For height positioning the speakers with the tweeters at eye level of your most common listening position.

### Conditioning and Break-in

We recommend that you play between 24 to 48 hours of music through the speakers before doing any critical listening or speaker placement.


### Cleaning

We don't recommend using any solvents or cleaners on cabinets or speaker drive units. Use a soft clean cloth to wipe the speakers.



**CAUTION**

RISK OF ELECTRIC SHOCK DO NOT OPEN!



**CAUTION: TO REDUCE THE RISK OF ELECTRIC SHOCK, DO NOT REMOVE COVER (OR BACK). NO USER SERVICEABLE PARTS INSIDE. REFER SERVICING TO QUALIFIED SERVICE PERSONNEL.**



#### DAINGEROUS VOLTAGE

Conductor dangerous voltage, that may be of sufficient magnitude to constitute a risk of electric shock to persons is present within this product's enclosure.

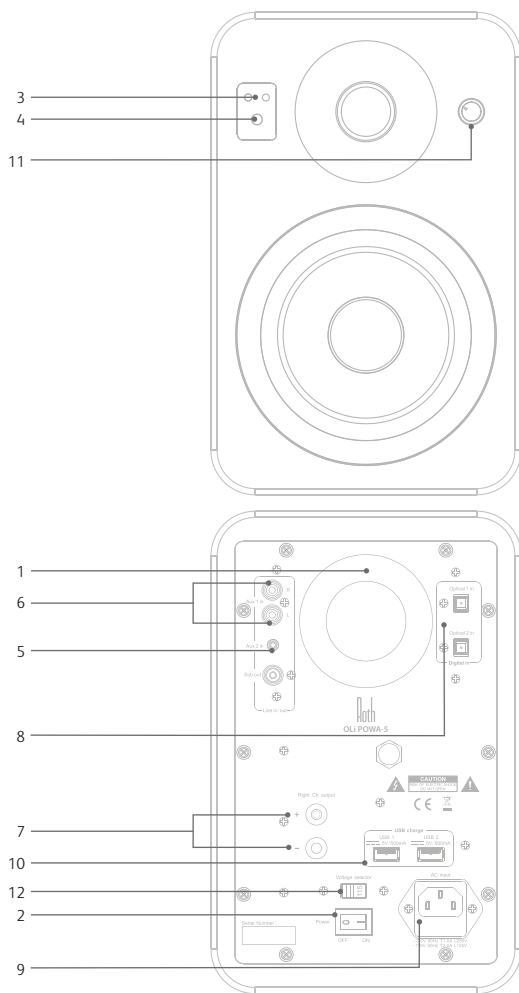


#### ATTENTION

The owner's manual contains important operating and maintenance instructions, for your safety, it is necessary to refer to the manual.

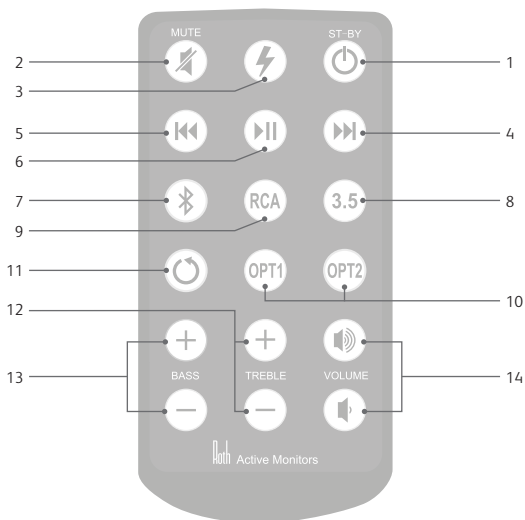
## Front & Rear Panel

1. Bass reflex port tube
2. Power On/Off
3. LED light display:  
**Blue** light on - work mode  
**Yellow** light on - standby mode  
(No signal input, will turn to standby after 10 minutes)  
**White** light on - bluetooth mode
4. Remote receiver
5. AUX 2 IN for 3.5mm mini jack plug, from ipod, pc etc
6. AUX 1 IN for right/left RCA stereo plugs, from CD/DVD player
7. Right output channel:  
Signal output, for connecting the passive POWA-5 speaker
8. Optical/Digital IN
9. Power supply input
10. iPod/MP3 charge sockets  
5V DC for charging
11. Volume knob
12. Switch for input voltage

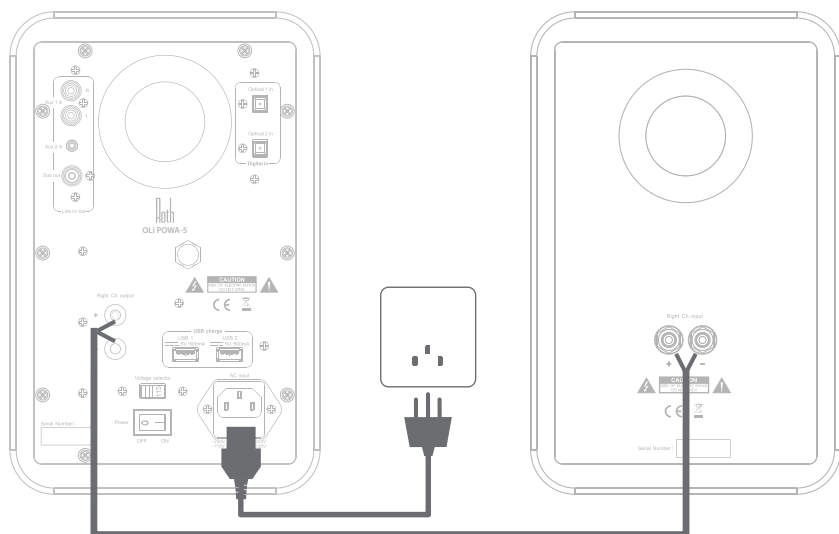


## Remote Control

1. Standby button - press to enter standby mode
2. Mute button
3. Charging mode
4. Next track
5. Previous track
6. Play/Pause
7. 3.5mm mini jack input
8. Bluetooth input
9. RCA jack input
10. Optical inputs 1 & 2
11. Reset treble & bass from 0db
12. Treble button:  
press "-", then treble will decrease  
press "+", then treble will increase
13. Bass button:  
press "-", then bass will decrease  
press "+", then bass will increase
14. Volume button:  
press "-", then volume will decrease  
press "+", then volume will increase



## Connecting Your Speakers



### Step 1

Connect the RED (+) and BLACK (-) terminals from the left speaker to the corresponding terminals on the right speaker using the included speaker cable. Insulation on cable must be stripped on all ends.

#### **WARNING:**

*As the OLi POWA-5 is self-powered do not connect the speaker terminals to the speaker outputs of a stereo receiver.*

### Step 2

Connect the power cord into the left speaker and the other end into the wall outlet.

## Bluetooth Pairing

**Pairing Bluetooth device and OLi POWA-5:** If you have a Bluetooth audio device, such as phone, MP3, PC, Tablet etc you should follow the pairing procedure.

1. Power on OLi POWA-5 and select Bluetooth on the units supplied remote.
2. Enable your Bluetooth device to search for a new Bluetooth device. "OLi POWA-5" should appear in the list of Bluetooth devices. If prompted for a pairing code enter "1234".
3. If pairing is successful the white LED will remain solid. The same Bluetooth device will not require pairing again and will remain on your device list - you may just need to reconnect from your device.
4. If for any reason the devices do not pair please repeat steps 1 and 2.

## Operation Bluetooth Function

1. Connect your Bluetooth device as above / or reconnect the already paired device.
2. You can navigate your Bluetooth enabled device player by using the OLi POWA-5 remote control.



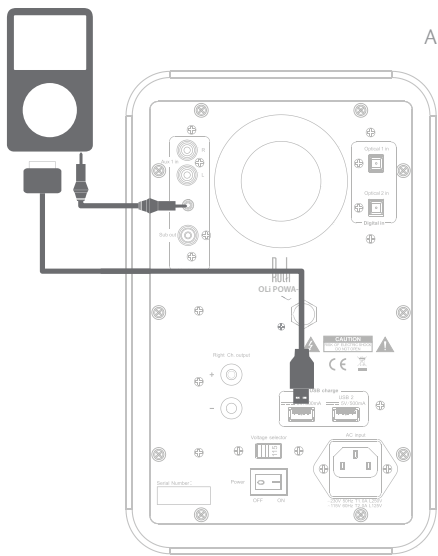
## Use with iPod / MP3 Player

### Configuration A

(For use with iPod):

For charging your iPod while playing, connect the 30-pin cable from the iPod to USB jack on the rear panel.

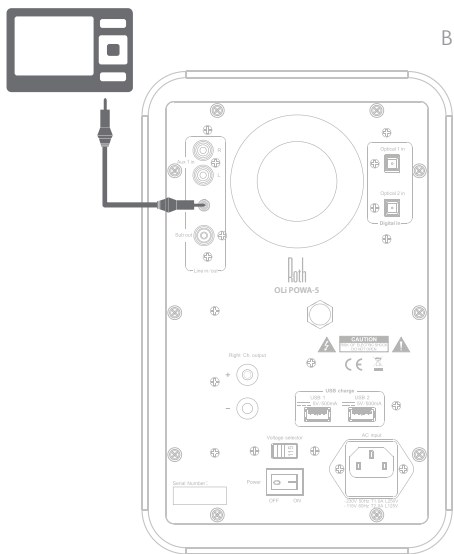
Connect the 3.5mm mini jack audio cable from iPod headphone jack to the AUDIO IN jack on the rear panel of OLi POWA-5.



### Configuration B

(All products with 3.5mm mini jack outputs):

Connect the STEREO INPUT L/R from any audio source with RCA L/R audio outputs. Connect the 3.5mm mini jack audio cable from 3.5mm mini jack output to the AUDIO IN jack on the rear panel.



**Attention:** When connecting audio cables the power switch must be turned OFF. After connecting all cables the power can be turned ON and the system is now ready to use.



## Use with Dockingstation

A

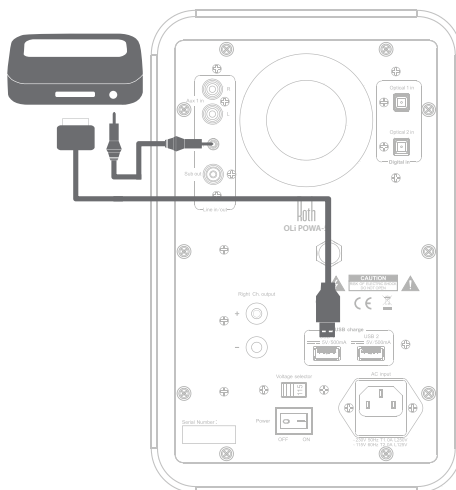
### Configuration A

(For use with iPod Universal Dockingstation):

Place the docking station next to your OLi POWA-5 speakers. Connect the Apple 30-pin cable from the dock to USB jack on the rear panel.

Connect the included 3.5mm mini jack audio cable from the dock to AUDIO IN jack on rear Panel.

Insert you iPod in dock, set the volume and enjoy.

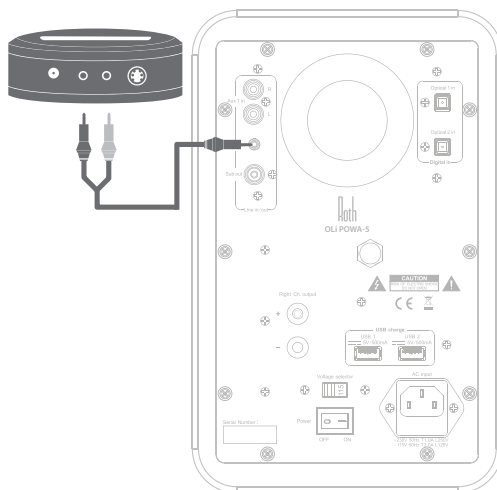


B

### Configuration B

(All products with 3.5mm mini jack outputs):

Connect the STEREO INPUT L/R from any audio source with RCA L/R audio outputs. Connect the 3.5mm mini jack audio cable from 3.5mm mini jack output to the AUDIO IN jack on the rear panel.



**Attention:** When connecting audio cables the power switch must be turned OFF. After connecting all cables the power can be turned ON and the system is now ready to use.

## Connect TV / DVD / Console / PC

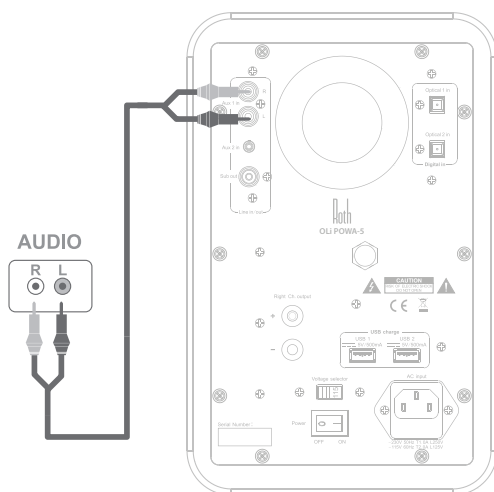
A

### Configuration A

(TV, DVD, CD-RCA Stereo Plugs):

Connect the RCA L/R to your TV,DVD etc. and the RCA L/R to the Stereo Input on rear panel of the Roth POWA-5.

**Note:** most newer TV remotes can control the Roth POWA-5 active speaker volume if connected to variable TV audio out.

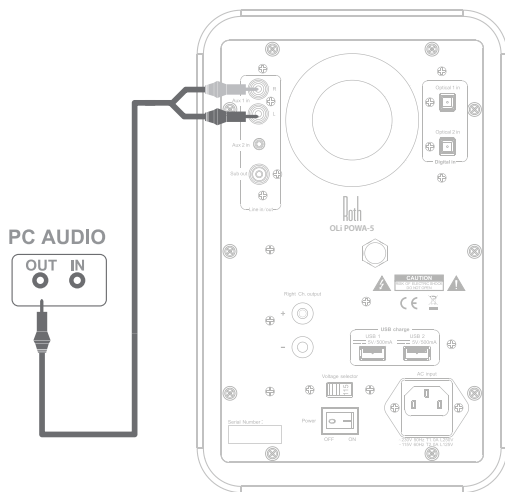


B

### Configuration B

(PC):

Connect the mini jack to your PC and the RCA L/R to the Stereo Input on rear panel of the Roth POWA-5.



## Limited Warranty

### Dear Customer

This limited warranty is valid for the original owner for a period of two years from the date of purchase, it is not transferable.

### What is covered by the limited warranty:

- The limited warranty covers all production and material defects of the product, except for the damages stated below.

### What is not covered by the limited warranty:

- Damages caused by packing and transport. Defects caused by accidents, misuse, normal wear and tear, mis-maintenance, voltage variation and overloading.
- Damages caused by incorrect installation or operation Damages caused by modification
- Other damages due to conditions beyond the supplier's control such as fire, rain, strike of lightning, and other force majeure events.

### How to claim parts or repair under warranty:

- To have your product serviced under warranty, you must contact the dealer from where you bought the product.
- You will need to produce this warranty booklet completed and stamped by your dealer on the date of purchase. Alternatively, you will need the original sales invoice or other proof of ownership and date of purchase.
- The supplier is liable only to repair or replace defective parts of products and the supplier is not responsible for indirect losses or damages arising from the use of the product.
- Transportation costs for servicing are not covered by the warranty.
- A service repair or replacement cannot exceed the value of the product under warranty, in no event shall the supplier be responsible or liable for special, incidental, consequential or indirect damages. or repair by a non-authorized service centre and use of non-original spare parts.

Dealer name and stamp:

Date of Purchase:

.....

## Specifications

### **OLi POWA-5 Active Monitors:**

Tweeter - 1 inch soft-dome

Woofer - 5 inch Kevlar

Nominal Impedance - 6 Ohm

Sensitivity 2.83V (1W/1M) - 87 dB

Power Output - 40W x 2

Frequency Response - 60Hz - 20KHz

Crossover System - 2-way

Amplifier Type - Class AB

Inputs - 1x RCA pair, 1x 3.5mm stereo,

2x Optical, 1x Bluetooth

Outputs - 2x USB (power), 1x Sub Woofer

Amplifier Input Sensitivity - 350mV (Line RCA)

Frequency Range - 20Hz-20KHz @ +/-3dB

THD - <0.7 %

Remote control included

Dimensions -175mm x 205mm x 272mm

Net Weight - 8.7 Kg



## Service

Please contact your local authorised dealer or reseller.

Email: [support@rothaudio.co.uk](mailto:support@rothaudio.co.uk)

