

# LED Player 512



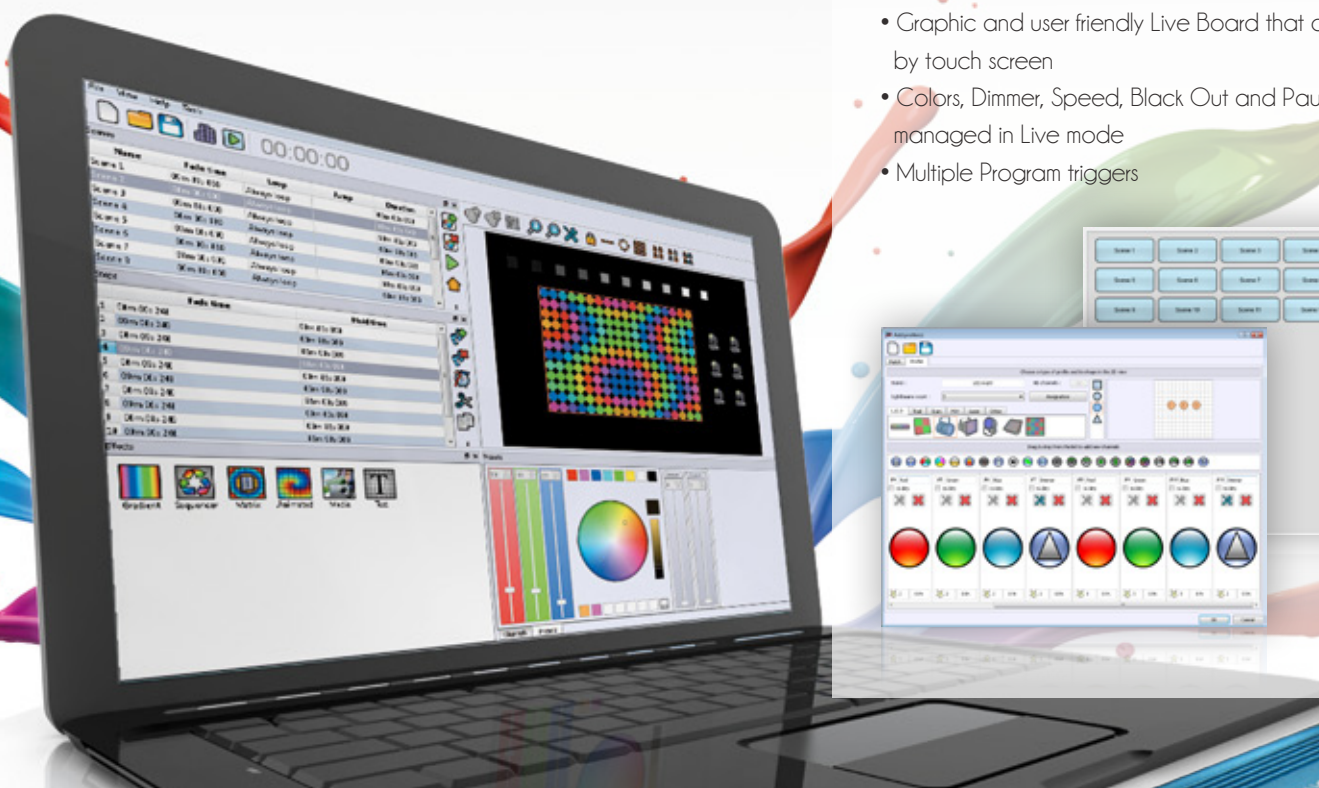
Led Player is the ideal DMX512 software for all Architectural applications or small/medium-sized projects. It manages all LED technology-based equipment and can control any type of standard DMX appliance. The software is the most user friendly and affordable solution for DMX lighting control.

## Available tools:

- Automatic Program Generator with Pan/Tilt and RGB effects
- Graphic Patch Editor for DMX fixture addressing
- Quick Fixture Profile Editor with 3000 files (Libraries) included
- Advanced matrix Editor to allow all LED configurations

## Main Functions:

- Full RGB (W/A) Color + Dimmer management and rendering
- Graphic 2D Edition of the fixtures
- Up to 5120 channels with several plugged interfaces
- Fade In time between programs and scenes
- Graphic and user friendly Live Board that can be operated by touch screen
- Colors, Dimmer, Speed, Black Out and Pause can be managed in Live mode
- Multiple Program triggers



## Technical Features:

- USB 2.0 to 512 DMX channels (2x512 channel version is available "Led Player 1024")
- Pilot LED to indicate the actual DMX signal state
- High voltage proof
- DMX Output Speed Signal able to be configured for perfect DMX line stability and full compatibility with any electronic fixtures (Mab, Break, Delay, frequency 1 to 45Hz)
- Strong Aluminium Housing that can be Wall Mounted



Contact us at [www.chromateq.com](http://www.chromateq.com)

We offer free Downloads at [chromateq.com](http://chromateq.com) including: software, drivers and development kits for Windows and Mac Os X systems.

Chromateq - Tel : +33 952 210 755 - Fax : +33 957 210 755



# LED Player Stand Alone



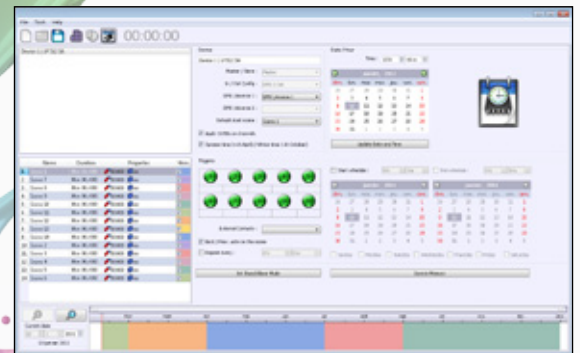
Led Player is the ideal DMX512 software for all Architectural applications thanks to its ability to configure scene triggers and write a show in to the memory of the Stand Alone interface. The software and the hardware are PC and MAC compatible and are optimized to manage all LED any type of DMX fixture due to its advanced RGB (W/A/Y) and Pan/Tilt features.

## Available tools:

- Provides all the software functions included in the Led Player 512
- Stand Alone mode to configure Triggers and load scenes in memory
- Graphic Time Line to display an overview for all your time triggers

## Main Functions:

- 16 bit, micro and fine DMX channel and Real Time Clock management in Stand Alone
- Can save 255 scenes and 4096 steps per scene
- Each scene can be triggered by Time, Date, Remote Control, Buttons or Contact Closures
- Compatible with all 32 and 64 bit systems (Mac/Pc)

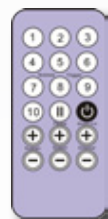


## Technical Features:

- USB 2.0 to 512 Stand Alone DMX Input/Output channels
- 1 Mb memory that allows 1 year's worth of show (capacity: 2000 steps / 512 ch)
- Trigger (default), Dimmer, and Speed mode
- 10 mechanical buttons included for scene triggers + 1 next + 1 previous button
- 15 External Contact Closure triggers allowed
- Slave/Master, Contact Closure and Remote Control triggers (RJ45)
- DMX Output Speed Signal also able to be configured in stand alone
- Housing that can be directly wall mounted or mounted on a DIN RAIL

## Minimum configuration required:

- Operating system: Mac Os X, Windows 32 or 64 bit (2000, XP, Vista, 7)
- CPU: 1Ghz ; RAM memory: 512 Mb
- Hard Disk space: 150 Mb



Contact us at [www.chromateq.com](http://www.chromateq.com)