

102.50 mm

410.00 mm

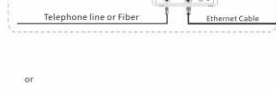
Tenda

Quick Install Guide

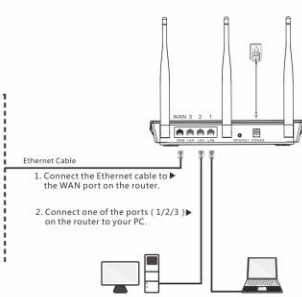
# 1 Hardware Install

Select a proper installation method according to what type of WAN medium your ISP is delivering:

**A. Telephone line or FTTH (fiber to the home)**



**B. Ethernet cable**



LED	Description
POWER	Solid: Indicates a proper connection to the power supply
SYS	Blinking: System is functioning properly
WPS	Off: WPS is disabled Blinking: Negotiating key Solid: WPS is enabled
WIFI	Solid: Wireless is enabled Blinking: Transferring data
WAN LAN (1-3)	Solid: Indicates proper connection Blinking: Transmitting data
S	Solid: Indicate the wireless signal is strong
G	Solid: Indicate the wireless signal is good

NOTE: Some router don't have the LEDs that indicate the status of wireless signal

Button	Description
RESET	Pressing it for over 10 seconds restores the device to factory default settings.

Images herein are for references only.

### Package Contents

- Wireless Router
  - Power Adapter
  - Quick Install Guide
  - Resource CD
- If any of the above items is incorrect, missing, or damaged, please contact your Tenda reseller for immediate replacement.

# 2 Configure Router

Launch any browser, say, IE and a screen as seen in the screenshot below will appear. If not, type 192.168.0.1 in the address bar and press Enter. If the screen still does not appear, follow instructions on Appendix 3 to configure your PC.



Please select a proper Internet connection type. Contact ISP for assistance if you don't know what type of Internet connection to select.

Internet Connection Type	Features	Instructions
PPPoE	Select <b>PPPoE</b> (Point to Point Protocol over Ethernet) if you want to connect to the Internet using a broadband connection that requires a username and a password.	Select <b>PPPoE</b> , enter the PPPoE username and PPPoE password provided by your ISP, customize a security key to secure your wireless network and then click <b>OK</b> .
DHCP	Select <b>DHCP</b> (Dynamic IP) if you can access Internet as soon as your computer directly connects to an Internet-enabled ADSL/Cable modem.	Select <b>DHCP</b> , customize a security key to secure your wireless network and then click <b>OK</b> .

\*For configurations of other Internet connection types, go to our website: [www.tendacn.com](http://www.tendacn.com) and download the latest user guide from **Support > Downloads**.

1. You can access Internet via a wired connection to the device when **Connection Status** displays **Connected**.
2. To access Internet via a wireless connection to the device, see **Appendix 1** (for Windows 7/MAC OS) or **Appendix 2** (for iPhone/iPad/Windows XP). For a desktop, you will need an external wireless adapter.

## Appendix 1: Join a Wireless Network

Note:  
 1. The default SSID (wireless network name) is Tenda\_XXXX, where XXXXX is the last 5 characters in the device's MAC address.  
 2. By default, for first-time wireless connection to the device, there is no preset security key. However, once you connect to it wirelessly and configure Internet connection yet make no change in the security key field, 12345678 will be automatically set as the security key by default.  
 3. To configure the router wirelessly, follow instructions on sections: **1. Hardware Install > Appendix 1** or **Appendix 2 > 2. Configure Router**.

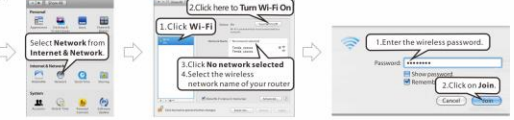
### Windows 7

Click **Start > Control Panel > Network and Sharing Center > Change Adapter Settings > right-click Wireless Network Connection > select Connect/Disconnect**.



### MAC OS

Click **System Preferences**.



Tenda

Quick Install Guide

## Appendix 2: Join a Wireless Network (iPhone/Windows XP)

### iPhone/iPad



### Windows XP

Click **Start > Control Panel > Network Connections > right-click Wireless Network Connection > select View Available Wireless Networks**.



## Appendix 3: Configure PC

### Windows 7

Click **Start > Control Panel > Network and Sharing Center > Change Adapter Settings > right-click Local Area Connection > select Properties**.



### MAC OS

Click on the **Apple** icon from the top-left corner and select **System Preferences**.



## FAQs

- Where should I place the wireless device for optimum performance?**
  1. Place it in the center to extend wireless coverage as far as possible.
  2. Never place the device near to metal objects or in direct sunshine.
  3. Keep it far away from devices that use the 2.4 GHz radio wave frequency to transmit and receive data, such as 802.11g/n wireless network devices, electronic devices such as cell phones, radio transmitters, blue tooth, cordless phones, fax machine, refrigerator and microwaves to avoid electronic interference.
- I cannot access the device's management interface. What should I do?**
  1. Verify the physical connection (namely, the Ethernet cable) between your PC and the device. For details, see **1. Hardware Install** hereof.
  2. Double check the TCP/IP settings on your PC. For details, see **Appendix 3. Configure PC** hereof.
  3. Press the Reset button for over 10 seconds on the device and then re-access the management interface.
  4. Change the Ethernet cable that connects your PC and the device.
  5. Try accessing device management interface from other PCs, smart phones or iPads.
  6. Connect your PC alone to one of the LAN ports on the device.
- I forget the wireless security key. What should I do? How do I configure or change the security key?**
  1. Try the default security key: 12345678.
  2. Access the device management interface and reconfigure a security key. For details, see **1. Hardware Install** and **2. Configure Router**.

3. Press the Reset button for over 10 seconds on the device to restore factory default settings.
- My notebook is unable to search wireless networks, what should I do?**
  1. Verify that wireless is enabled on your notebook by checking the wireless hardware or software button on your notebook. The hardware button is usually located on the side of your notebook. Note that some notebooks may not have such hardware button. Software button can be implemented by pressing **F1-F12**. It is situated on the bottom left corner of your keyboard. It may be any key between **F1-F12** depending on what type of keyboard you are using.
  2. Log in to the device, select **Advanced > Wireless** and change the wireless network name (SSID). Then search again.
  3. Follow below steps to verify that wireless is enabled on your notebook (for Windows XP OS only).  
From the desktop, right-click on the My Computer icon and select **Manage**. Select **Services and Applications**, double click **Services** and view the status of **Wireless Zero Configuration**. If status does not display **Started**, right click the **Wireless Zero Configuration** and select **Start**. If Startup Type displays **Disabled**, right click the **Wireless Zero Configuration**, select **Properties**; from the Startup Type drop-down list box, select **Automatic** and then click **Start in Service Status**.
- Why cannot I join the searched wireless network?**
  1. Verify that you entered a correct security key. If not, see question 3.
  2. Log in to the device, select **Advanced > Wireless** and change the wireless network name

3. Log in to the device, select **Advanced > Wireless > Wireless Security** and change the security settings. Then connect again.

- Wireless connection shows "Connected" but I cannot access Internet. What should I do?**
  1. Verify that you are connecting to a right SSID (wireless network).
  2. Follow instructions on this Quick Install Guide to reconfigure all settings.

Manufacturer: Shenzhen Tenda Technology Co., Ltd  
 Add: Tenda Industrial Zone, No.34-1 Shilong Road, Shiyan Town, Baoan District, Shenzhen, China.  
 Post Code: 518108  
 Website: <http://www.tendacn.com>  
 Email: [support02@tenda.com.cn](mailto:support02@tenda.com.cn)  
 YouTube: [tendasz1999](https://www.youtube.com/user/tendasz)  
 Skype: [tendasz](https://www.skype.com/user/tendasz)  
 Hotline:  
 1-800-570-5892 (USA) (061) 1300787922 (Australia) (064)800787922 (New Zealand)  
 (044)197-780-6119 (UK) (0852)3612083 (HongKong)