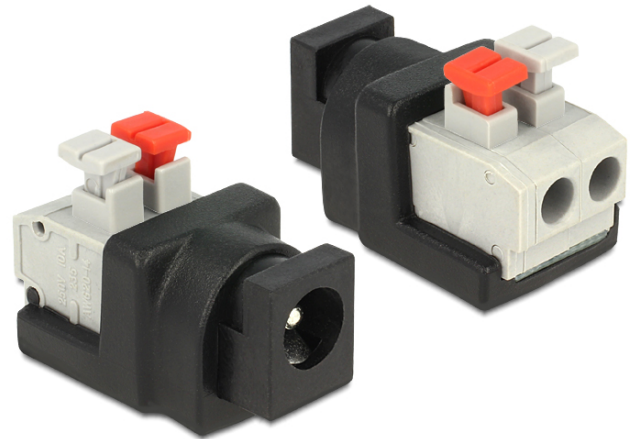




# Delock Adapter DC 5.5 x 2.1 mm female > Terminal Block with push button 2 pin

## Description

This DC to Terminal Block adapter is made for special industrial application e.g. for connecting single wires with open cable heads. It also can be used in the hobby area for example for model railroading. Therefor you can connect various devices with suitable DC power connector to the adapter in order to supply your devices individually with power (depending on the requirements of device).



## Specification

- Connector:  
DC 2.1 (inside) x 5.5 (outside) mm female  
2 pin Terminal Block
- Terminal Block screwless
- Pitch 5.0 mm
- Dimensions (LxWxH): ca. 27 x 18 x 15 mm

## System requirements

- One free DC 5.5 x 2.1 male port

## Package content

- Adapter

## Item No. 65524

EAN: 4043619655243

Country of origin: China

Package: Poly bag

