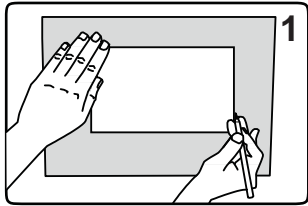
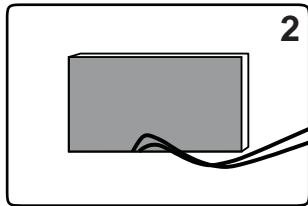


IN-WALL FRAMELESS SPEAKER

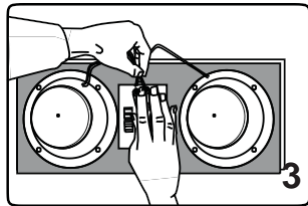


1 Use the enclosed template to mark out the cutout, then simply cut along the line. This is the only cut you'll need to make!

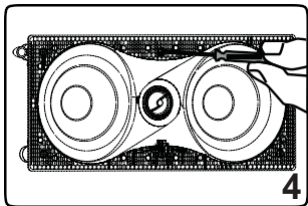
Notice: Prior to beginning your installation, check to ensure the depth and space of your mounting location is large enough for the speaker being installed!



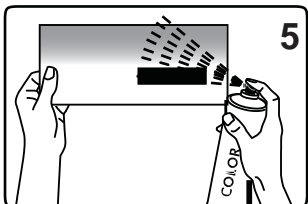
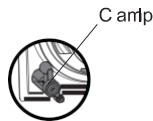
2 When laying the loudspeaker cable from the amplifier to the installation point, be sure that the cable ends about 30 cm (12") beyond the wall cutout.



3 Please connect the speaker cable to the screw clamps. Ensure that the polarity is correct.



4 Tighten clamp screws until you can feel the frame, press firmly against the wall. This indicates that the clamp is extended and is gripping the wall.

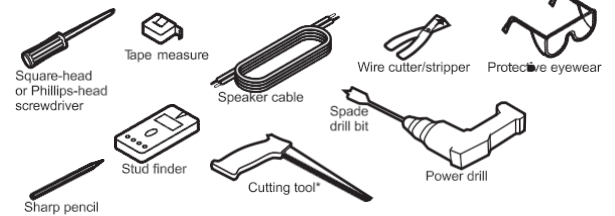


5 The grill to cover the speaker can simply be coated with regular paint. If the grill comes with an additional coating this must be removed before painting.

CS-6 Speaker Operation Manual - English

Equipment You Will Need

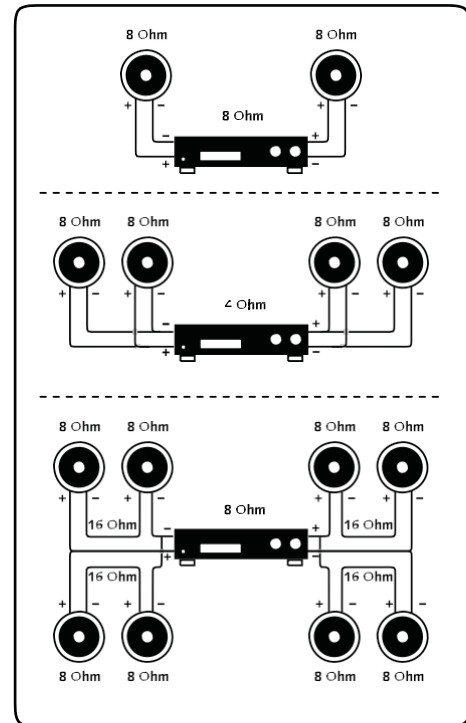
Besides the template that is included, you must have a ladder and the equipment shown below to make the installation go smoothly.



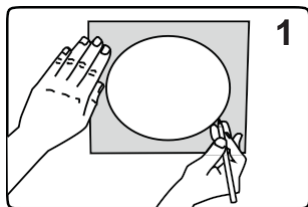
Troubleshooting

Problem	Possible cause	Solution
Bass too weak	Connection cable wrongly connected	Check connection cable and reconnect when required.

Wiring Possibilities

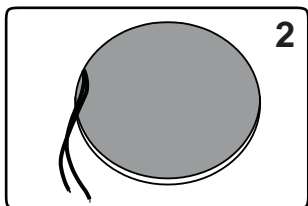


IN-CEILING FRAMELESS SPEAKER

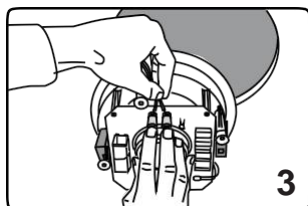


1 Use the enclosed template to mark out the cutout, then simply cut along the line. This is the only cut you'll need to make!

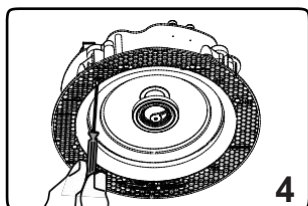
Notice: Prior to beginning your installation, check to ensure the depth and space of your mounting location is large enough for the speaker being installed!



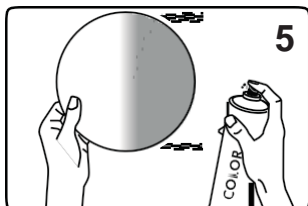
2 When laying the loudspeaker cable from the amplifier to the installation point, be sure that the cable ends about 30 cm (12") beyond the wall cutout.



3 Please connect the speaker cable to the screw clamps. Ensure that the polarity is correct.

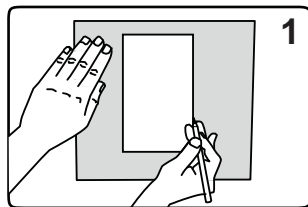


4 Tighten clamp screws until you can feel the frame, press firmly against the wall. This indicates that the clamp is extended and is gripping the wall.



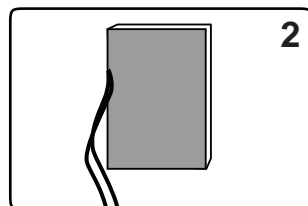
5 The grill to cover the speaker can simply be coated with regular paint. If the grill comes with an additional coating this must be removed before painting.

IN-WALL FRAMELESS SPEAKER

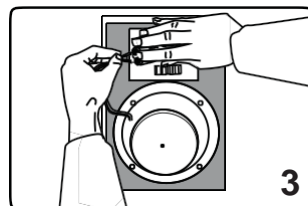


1 Use the enclosed template to mark out the cutout, then simply cut along the line. This is the only cut you'll need to make!

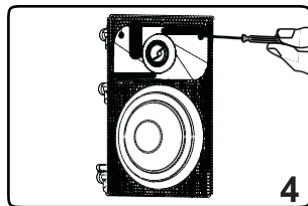
Notice: Prior to beginning your installation, check to ensure the depth and space of your mounting location is large enough for the speaker being installed!



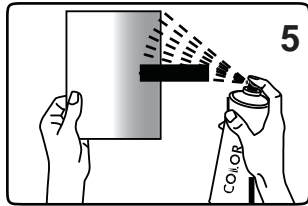
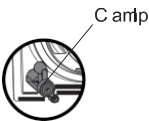
2 When laying the loudspeaker cable from the amplifier to the installation point, be sure that the cable ends about 30 cm (12") beyond the wall cutout.



3 Please connect the speaker cable to the screw clamps. Ensure that the polarity is correct.



4 Tighten clamp screws until you can feel the frame, press firmly against the wall. This indicates that the clamp is extended and is gripping the wall.



5 The grill to cover the speaker can simply be coated with regular paint. If the grill comes with an additional coating this must be removed before painting.