

Tenda®

We Connect The World

User's Manual

16/24 Port Giga Switch



TEG1016D/1024D

VER:1.0

Manufacturer : Shenzhen Tenda Technology Co., Ltd
Address : SangTai Industrial Zone, Xili Town, Nanshan District, Shenzhen, PRC
Website : www.tenda.cn
Technical Support : 0755-27657180
Email : tenda@tenda.com.cn
Website : <http://www.tenda.cn>

Copyright Statement

Tenda[®] is the registered trademark of Shenzhen Tenda Technology Co., Ltd. Other trademarks or trade names mentioned herein are the trademarks or registered trademarks of the company. Copyright of the whole products as well as its accessories and softwares, belongs to Shenzhen Tenda Technology Co., Ltd. Without the permission of Shenzhen Tenda Technology Co., Ltd, any individual or party is not allowed to copy, plagiarize, imitate or translate it into other languages.

All the photos and product specifications mentioned in this manual are for references only. As to the upgrade of softwares and hardwares, there will be changes. And if there are changes, Tenda is not responsible for informing in advance. If you want to know more about our products information, please visit our website at www.tenda.cn

Introduction

The TEG1016D/1024D Gigabit Ethernet Switch, a mini desktop switch, is designed to resolve data transfer bottleneck in the enterprises and Internet Cafe. It has 16/24 10/100/1000Mbps auto-negotiation Ethernet ports and high-speed dynamic memory, supports auto MDI/MDI-X and store-and-forward function to make sure the packet to be sent each port effectively. "Plug and play" function helps you set up easily. In addition, the Gigabit ports can be used as normal ports, as well as Uplink ports to connect backbone network. You can replace the 10/100Mbps switch with the TEG1016D/1024D to resolve the bottleneck issues of server terminal connectivity, because the speed at each port can be up to 2000Mbps for full-duplex mode. It's the best choice for you to upgrade from the normal 10/100Mbps to 1000Mbps. Moreover, its easy setup and no network management will benefit you a lot. So you can import this Gigabit Switch as a prime switch to improve the speed between different departments and servers.

Switch Features

- Compliant to the IEEE802.3, IEEE802.3u, IEEE802.3ab , IEEE802.x Ethernet standards, and supports 10/100/1000Mbps transfer mode.
- Supports NWAY auto-negotiation function, auto-detect transfer data rate,

PnP, full-duplex, flow control, and can choose the best network connectivity mode automatically to avoid the complex setting procedure.

- Supports auto MDI/MDIX function; predigest the network span and maintenance.
- Supports IEEE802.3x flow control for full-duplex, and back pressure flow control for half-duplex.
- As high as 32/48Gbps backplane bandwidth; supports non-blocking wire-speed forwarding.
- Supports store-and-forward switching method.
- Internal universal power supply.
- Supports MAC address auto-learning function, integrated 8K MAC address table.

Checklist

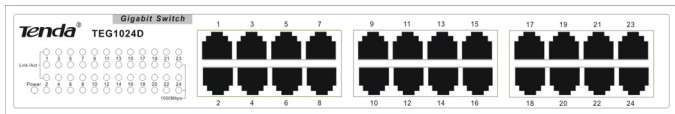
Please check the articles carefully after you open the packing as below:

- ✓ One 16/24-Port Gigabit Ethernet switch
- ✓ Mounting ears, eight screws, four rubber feet
- ✓ One power cord
- ✓ This manual

If any of listed items are mismatched, missing or damaged, please contact the Tenda reseller from whom you purchased for replacement immediately.

Front Panel and Rear Panel Specifications

The front panel of 16/24-Port Gigabit Ethernet Switch includes 16/24 1000Mbps RJ-45 ports in the right side and LED indicators in the left side. Each 1000Mbps port has 1 LINK/ACT indicator, 1 1000Mbps indicator; 1 power indicator in the front panel.



Front panel view of the Switch

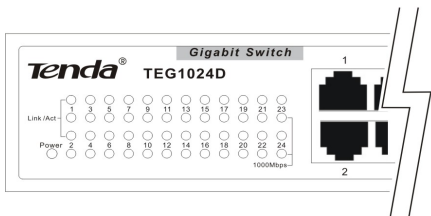
The rear panel has 1 AC power port, used for AC power input.



Rear panel view of the Switch

LED Indicator Specifications

The LED indicators of the Switch include Power, Link/ACT and 10/100/1000Mbps indicators. You can see their operating situation through these LED indicators.



LED indicators

The following chart shows the LED indicators of the Switch along with explanation of each indicator.

LED Indicators	Colors	Status	Description
Power	Green	Lit up	This indicator lights when the Switch turns on.
	—	No lit	If this indicator is not lighting, please check the AC power connector to ensure proper connectivity of the power cable and the Switch.
LINK/ACT	Green	Lit up	The other devices connect to the port of the switch.
	Green	Flashing	The port is transmitting or receiving datum.
1000Mbps	Green	Lit up	The Switch connects to the other devices at 1000Mbps speed.

Remarks: 1000Mbps port may be flashing together with Link/Act when it transfers datum.

Before Connecting to the Network

TEG1016D/1024D supports the desktop and rack-mountable installation. Before connecting to the network, please pay attention to the following instructions:

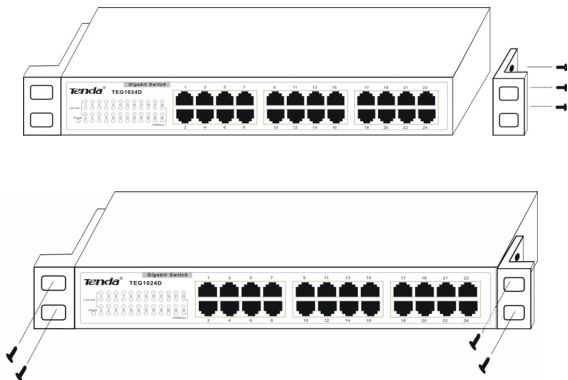
- Don't put heavy articles on the Switch.
- Power sockets and equipments should be within 1.5 meters of the Switch.
- Check power supply to confirm the safe connection.
- Make sure there's adequate space for proper heat dissipation and adequate ventilation around the Switch.
- When installing the Switch on a level surface, attach the rubber feet to the bottom of the device in case of being scratched or scratching other surfaces.

Rack-mountable Installation

The TEG1016D/1024D Gigabit Ethernet Switch also supports rack-mount. If you want to install the device in this way, please refer to the following instructions to set up.

Setting up the Switch on a Rack

The 16/24-Port Gigabit Switch can easily be set up on a rack. Two mounting ears are employed to stabilize the Switch. In order to view the LEDs, the front panel exposed is needed. Please refer to the following illustration:

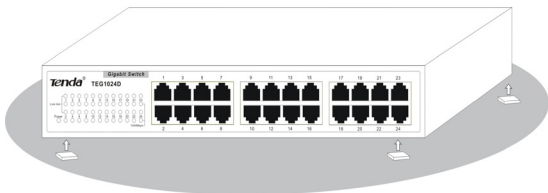


Setting up the Switch to a rack

1. Attach the ears to each side of the Switch, using the screw-holes located on the side of the device.
2. Firmly attach the ears to the rack as the illustration. Please be careful during the setup.

Attaching the Rubber Feet

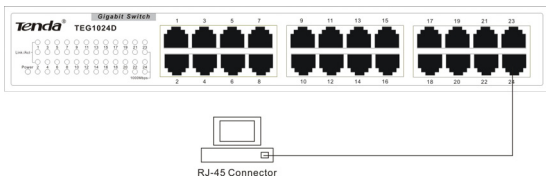
Position and apply rubber feet to the underside of the TEG1016D/1024D Gigabit Switch, using rubber feet provided.



Attaching the rubber feet

Switch to End Node

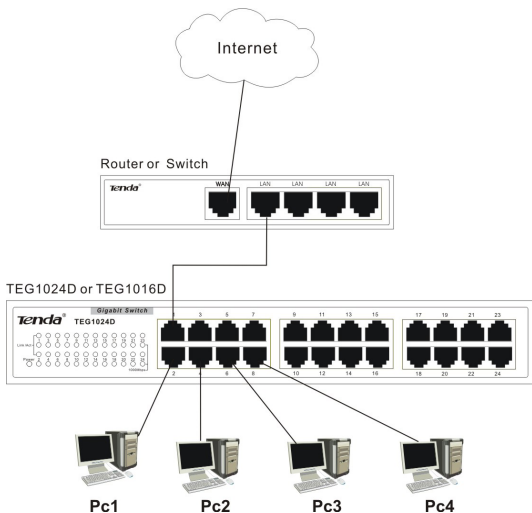
Use standard Ethernet cable to connect the Switch to end nodes as described below. Switch ports will automatically adjust to the characteristics (MDI-II/MDI-X, speed, duplex) of the device to which is connected.



Switch connecting to an end node

Please refer to the *LED Indicator Specifications*. The Link/Act LEDs for each port lights green when the link is available.

Switch to Router or Switch



Connecting to another router or switch

Please refer to the *LED Indicator Specifications*. The Link/Act LEDs for each port lights green when the link is available.

Technology Parameters

Features	
Standards	IEEE802.3 10BASE-T Ethernet IEEE802.3u 100BASE-TX/FX Fast Ethernet IEEE802.3 ab Gigabit Ethernet IEEE802.x Flow Control supports for Full Duplex
Protocol	CSMA/CD
Topological Structure	Star
Network Cables	10BASE-T: Cat.3 UTP or above 100BASE-TX: Cat.5 UTP /STP 1000Base-T: Cat.5 , Cat.5e or Cat.6 UTP/STP
Port Quantity	16/24 10/100/1000Mbps ports
Performance	
Transmission Method	Fast store-and-forward
MAC Address Table	8K
Packet Filtering/ Forwarding Rate	14880pps(10Mbps)per port
	148800pps(100Mbps)per port
	1488000pps(1000Mbps)per port
MAC Address Learning	Self-learning, auto-aging.
Physical and Environmental	
Power	Internal universal power supply
AC INPUT	AC100~240V, 50/60Hz
Power Consumption	15W/20W
Operating Temperature	0℃~40℃
Storage Temperature	-10℃~70℃
Humidity	5%~95% RH (no condensing)
Dimensions (L×W×H)	11.02in. ×7.09in. ×1.93in. (280mm×180mm×44mm)
Weight	TEG1016D:1.70Kg/ TEG1024D:1.81Kg

Tenda®

We Connect The World

User's Manual

16/24 Port Giga Switch

We Connect The World



TEG1016D/1024D

Manufacturer: ShenZhen Tenda Technology Co.,Ltd
Address: SangTai Industrial Zone, Nanshan
District, ShenZhen, P.R.CHINA

F A E: +86 - 755 - 27657180
Postcode: 518108
Website: <http://www.tenda.cn>

VER:1.0
WWW.TENDA.CN